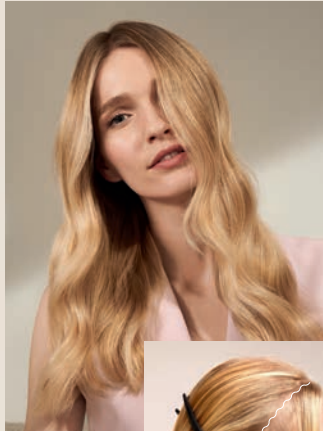


SHINEFINITY GLAZE

Root Shadow



COLOR FORMULA

Shinefinity, Shinefinity activator

Root shadow:

20g 07/12 + 10g 08/0
+ 30g brush & bowl activator

Ends:

20g 08/0 + 20g 00/00
+ 40g bottle activator



1 ROOT SHADOW

Apply the root shadow, minimum 2cm over the lightened area. However, keep the shadow minimal around the face frame.



2 END GLAZE

Apply the lighter lengths and ends glaze with a bottle application for speed.



3 BLEND

Gently comb the transition area to aid the blend of the shadow and lengths.



04/12

cool
chia



07/12

cool
mushroom

Top Tip

Using the /12 shades on their own or in a mix will nearly mimic the ashen tones often found in natural hair.

SHINEFINITY GLAZE

Corrective



COLOR FORMULA

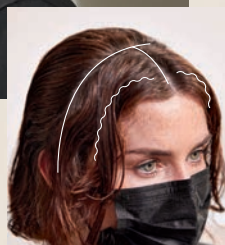
Shinefinity, Shinefinity activator

Roots + face frame:

40g 04/12 + 40g Brush & Bowl activator

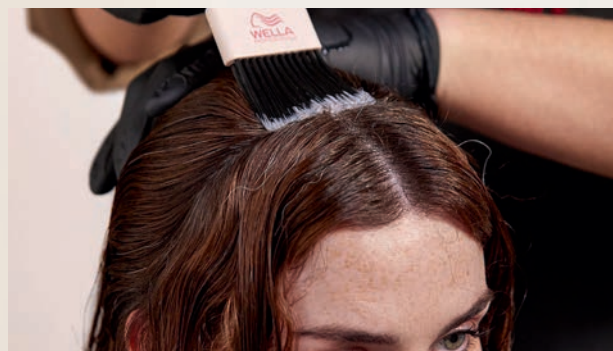
Ends:

30g 04/12 + 15g 07/12
+ 45g Brush & Bowl activator



1 FACE FRAME

Start by applying your deeper shade fluidly to the root area throughout.



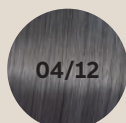
2 ROOTS

Around the face apply it through to the lengths, to add more strength around the framing.



3 ENDS

Immediately applying the slightly lighter glaze through the ends to preserve natural highs and low.



04/12

cool
chia



07/12

cool
mushroom

Top Tip

Did you know /12 shades are the perfect choice to neutralize orange and red brassiness without worrying about any off tones!